

# User manual

## FKI Vertical Bun Toaster

Model Series VBT480 STD

VBT960 STD



## Content

Introduction.....	3
1.1 Generally.....	4
1.1.1 Product Description .....	4
1.1.2 Manufakturer.....	4
1.1.3 Technical specifications and consumption .....	5
1.1.4 Modification.....	5
2 Security .....	6
2.1 Personal safety equipment.....	6
2.2 Potential Dangers .....	6
2.3 Who is allowed to use the machine .....	6
2.4 Transport/installation/attachment .....	7
2.4.1 Transport .....	7
2.4.2 Deployment .....	7
2.4.3 Attachment.....	8
2.5 Operation.....	8
2.6 Cleaning/maintenance .....	8
2.7 Servicing.....	9
3 Operation.....	9
3.1 Before commissioning .....	9
3.2 Operation.....	10
3.3 Repair and spare parts.....	13
3.4 Specifications for spare parts .....	13
3.5 Spare parts list .....	14
3.6 Electrical diagram .....	15
3.7 Generally.....	17
3.8 Daily cleaning.....	17
Disposal .....	18
3.9 Packaging.....	18
3.10 The machine after discontinuation of use.....	18
4 EU DECLARATION OF CONFORMITY .....	19

## Introduction

### **Original operating instructions**

This manual is FKI Fast Food Teknik's original manual for the Vertical Bun Toaster model series VBT960 STD, type code SVT-25

### **Purpose of guidance**

This manual aims to ensure proper installation, use, handling, and maintenance of the Vertical Bun Toaster. Hereinafter referred to as the device.



**Important! Read the instructions carefully before use and save for later use.**

### **Storing instructions**

The instructions must be stored so that they are always easily accessible to the user and service technician.

### **Knowledge of supervision**

**The owner of the appliance is obliged to** ensure that anyone who must handle the appliance – whether in connection with operation, service, maintenance or repair – has gone through the relevant sections of the instructions. Similarly, **persons working with the appliance are obliged to familiarize themselves with the contents** of the instructions.

Anyone who is to operate, service, maintain or repair the appliance is obliged to seek information in the instructions themselves.

## 1.1 Generally

### 1.1.1 Product Description

The Vertical Bun Toaster VBT960 STD is intended for heating and caramelizing half burger buns.

Conveyor belt width is 280mm

Distance between heater and strip = min. thickness **10mm**, max thickness **35mm**. It can be individually adjusted on both sides. In continuous operation, the VCT960 STD has a capacity of 960 burger buns per hour, size 5" burger buns.

The appliance must **not** be used for burgers, sausages, pizza, baguettes or other products containing fat, oil or the like.

The appliance is intended to be placed on a table at a suitable working height and is fed from the top. Remove the finished buns from the drawer at the bottom, from the front.

### 1.1.2 Manufaktur

FKI Fast Food Teknik a/s

Byghøjvej 5, Verringe DK-5690 Tommerup

[www.fki.dk](http://www.fki.dk)

Machine signs

#### 1.1.2.1 Type designation SVT-25



### 1.1.3 Technical specifications and consumption

#### 1.1.3.1 Dimensions and weight

Model designation	Width x Depth x Height	Weight in kg
VBT480 STD	325 x 420 (530 with bread drawer) x 515	27
VBT960 STD	325 x 460 (530 with bread drawer) x 515	28

#### 1.1.3.2 Effect

Connection voltage: 230 V AC

Connection frequency: 50/60 Hz

Model designation	Power Recording [Amp.]	Power [kW]
VBT480 STD	2,8	0,6
VBT960 STD	4,5	1,0

#### Noise

Airborne noise emitted by the Vertical Bun Apparatus:

Measured sound pressure level: < 60 dB(A)

#### 1.1.3.3 Intended Use

The appliance may only be used for food preparation.

### 1.1.4 Modification

The appliance must not be modified or serviced by unauthorized persons in any way. If this happens, FKI Fast Food Teknik a/s disclaims any responsibility.

## 2 Security

### Generally

Read these safety instructions before using the appliance. Keep them nearby for later reference. These instructions and the appliance itself contain important safety information that must always be read and observed. FKI Fast Food Teknik a/s disclaims any responsibility for non-compliance with these safety rules, for inappropriate use of the appliance or incorrect settings.

### 2.1 Personal safety equipment



It is recommended that gloves and goggles be worn when working with the device, as the surfaces of the device are hot.

Warm surface – wear gloves



### 2.2 Potential Dangers



When the appliance is in use, the user should be aware that the appliance is hot. In particular, the top and bread divider must not be touched without the use of protective gloves. Therefore, be careful not to touch these while operating the appliance.



During operation, only the front controls may be touched. The food prepared on the appliance is placed on and removed with a specially designed tool to avoid contact with the hot surfaces of the appliance.

### 2.3 Who is allowed to use the machine



This appliance is not intended for use by children! Nor persons with reduced physical or mental capabilities, or lack of experience and knowledge, unless they have been trained or instructed in the use of the appliance by a person responsible for their safety.

## 2.4 Transport/installation/attachment

### 2.4.1 Transport

The appliance is supplied in transport packaging and should only be transported in the same way if it is moved.

**WARNING: Do not move the machine during operation.**



Moving and setting up the appliance must be carried out by two or more people! RISK of injury!

Wear protective gloves and safety shoes during unpacking and installation – cut hazard.

### 2.4.2 Deployment

The appliance is set up on a suitable worktop or similar at a suitable working height. The device is operated from the front. The appliance is intended to be placed on a table or counter and is equipped with adjustable legs.



Connection of the appliance should be carried out by an authorised electrician. The appliance is equipped with a 1-pole plug with earth (F+N+J). Make sure that the installation is carried out correctly with sufficient fuse size, protection against fault current and grounding.



**WARNING: The appliance must be grounded in accordance with national safety standards for electrical equipment, otherwise it may cause electric shock and serious injury.**



The appliance must be acclimatized before use. Therefore, it should not be started until eight hours have passed.



The power supply must be capable of being interrupted either by unplugging it or by means of a multi-pole circuit breaker located before the power outlet in accordance with the regulations in force in the area and be freely accessible. The appliance must be earthed in accordance with national safety standards for electrical equipment.



Do not use extension cords or multi-sockets. After installation, there must be no direct access to the electrical parts. Never touch the appliance if you are wet or have bare feet. Do not use this

appliance if the power cord or plug is damaged, if the appliance is not working properly, or if it is damaged, or has been dropped on the floor.



Any replacement of the power cable must be made by an authorized technician to avoid the risk of injury – RISK of electric shock. Only use cables that are oil resistant!

### 2.4.3 Attachment



The device does not need to be attached, it is equipped with non-slip legs to ensure stable and easy installation.

## 2.5 Operation



The appliance must be supervised during use. The power connection must be disconnected if the appliance is being discharged.



The appliance is intended for the manufacture of food only. Do not apply liquids or other substances that have a focal point of less than 300°C.

## 2.6 Cleaning/maintenance



**CLEANING AND MAINTENANCE WARNING:** Do not use products containing acid as this may damage the surface of the product.

The appliance should be cleaned several times a day of excess crumbs and any frying fat. The bread drawer is emptied and cleaned as needed.

Once a day, clean the appliance thoroughly on the frying surface and wipe all external surfaces with damp cloth.

Cleaning should not be carried out when the appliance is more than 50°C hot.



Never use steam cleaners/foam cleaners - RISK of electric shock.

## 2.7 Servicing



The appliance must always be switched off and disconnected from the power source before starting repairs.

Repair of the appliance should only be carried out by authorised personnel.

## 3 Operation

### 3.1 Before commissioning



Before start-up, remove all packaging and protective plastics from the appliance and dispose of in accordance with applicable regulations (*see section 3.9*). Read carefully *Section 2* safety before connecting the appliance.



Before start-up, clean the appliance according to *section 2.6*.

### 3.2 Operation

The device is equipped with variable belt speed and the distance between the belt and heating surface can be adjusted using the 2 knobs. (Distance from 10-35mm)

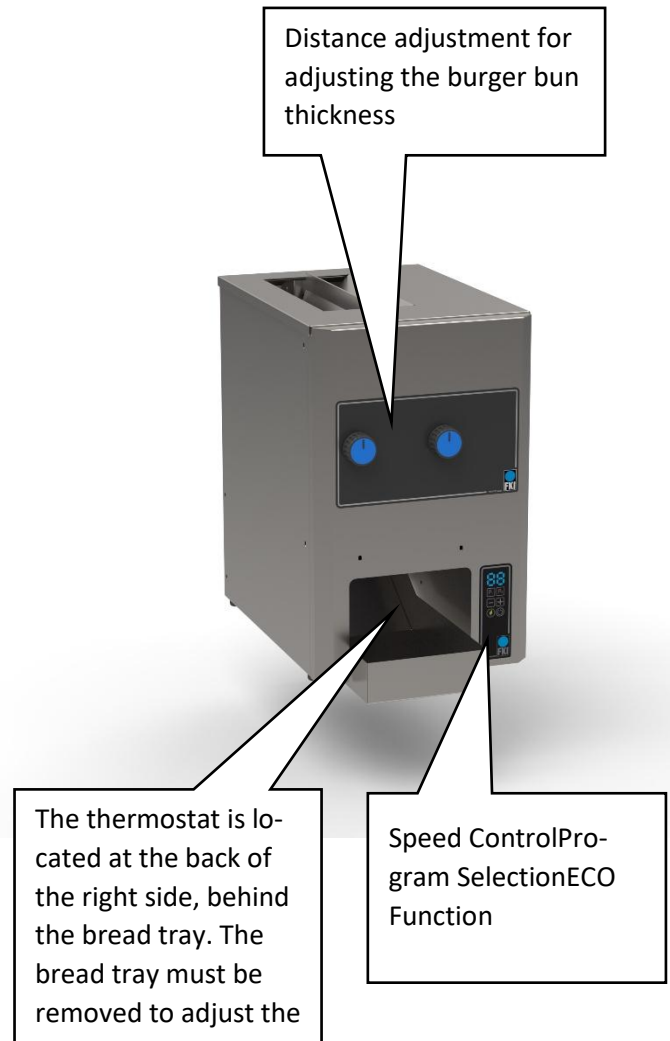
The temperature of the heating surface is thermostatically controlled and is regulated from 50-250°C by turning the knob.

Place the burger buns with the cut surface towards the middle, on each side of the **bread divider**. The machine automatically feeds the buns through and into the bread tray.

The distance between the band and the heating plate can be adjusted so that the buns are held firmly without being pinched.

The speed is regulated on the display so that the desired shake and caramelization is achieved.

If necessary, the temperature can be regulated between 50-250°C





### How to control the speed of the ribbon toaster

You can adjust the speed of the ribbon by using **the + and –** buttons.

- A single press of + or - changes the speed one step at a time.
- If you hold **down + or -** the speed changes faster.

---

### • Save and use your favorite settings

You can save two of your favorite settings on the **P1** and **P2** buttons.

1. Adjust the speed of the tape until you have the speed you want to save.
2. Hold down either **P1** or **P2** for three seconds until the light turns on. Now the speed is saved.

To use your saved speed, just press **P1** or **P2** briefly. The light on the button will turn on to show what speed is active. If you subsequently change the speed by + or -, the light on the P button will turn off again.

---

### • On, off and ECO function

- **On/off:** Use **the standby symbol** to turn the toaster on and off.
- **ECO Mode:** Press the **ECO** button to pause the band. The button will illuminate while the ECO function is active. To start the band again, just press the **ECO** button so that the light turns off.

All your settings, including the saved speeds of P1 and P2, are automatically saved. This means that you can safely move the toaster without losing your settings.

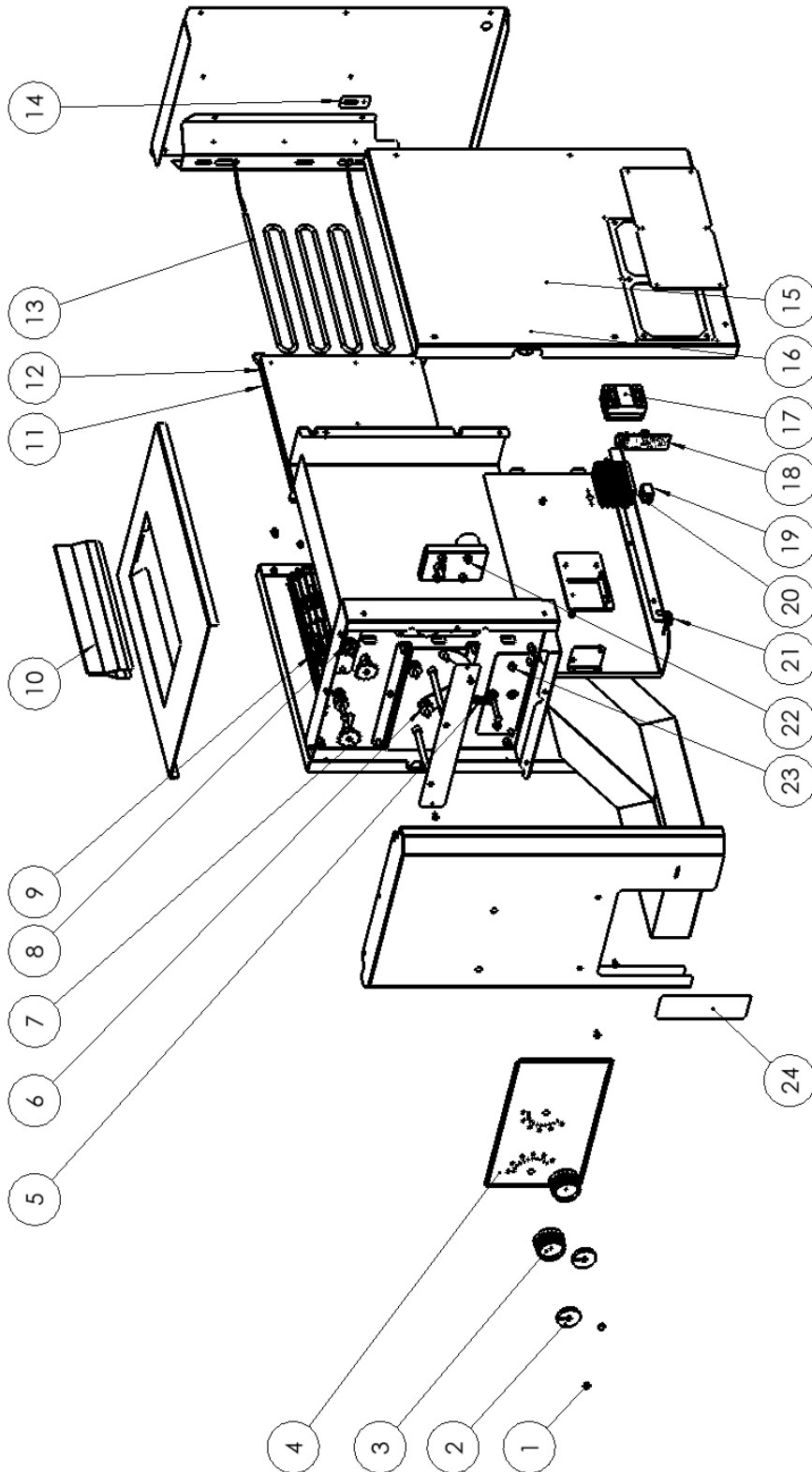


The thermostat is located behind the bread tray on the right side. The bread tray must be removed to adjust the temperature. If the temperature is to be regulated, it can be lowered by turning counterclockwise and increased by turning clockwise. It is not possible to read a direct temperature scale, the primary control is done by the speed of the band, which is adjusted with the buttons on the keyboard. However, it is possible to fine-tune your setting with a temperature adjustment in combination with the speed control.

### 3.3 Repair and spare parts

Repairs may only be carried out by authorized service personnel with knowledge of electrical machinery.

### 3.4 Specifications for spare parts



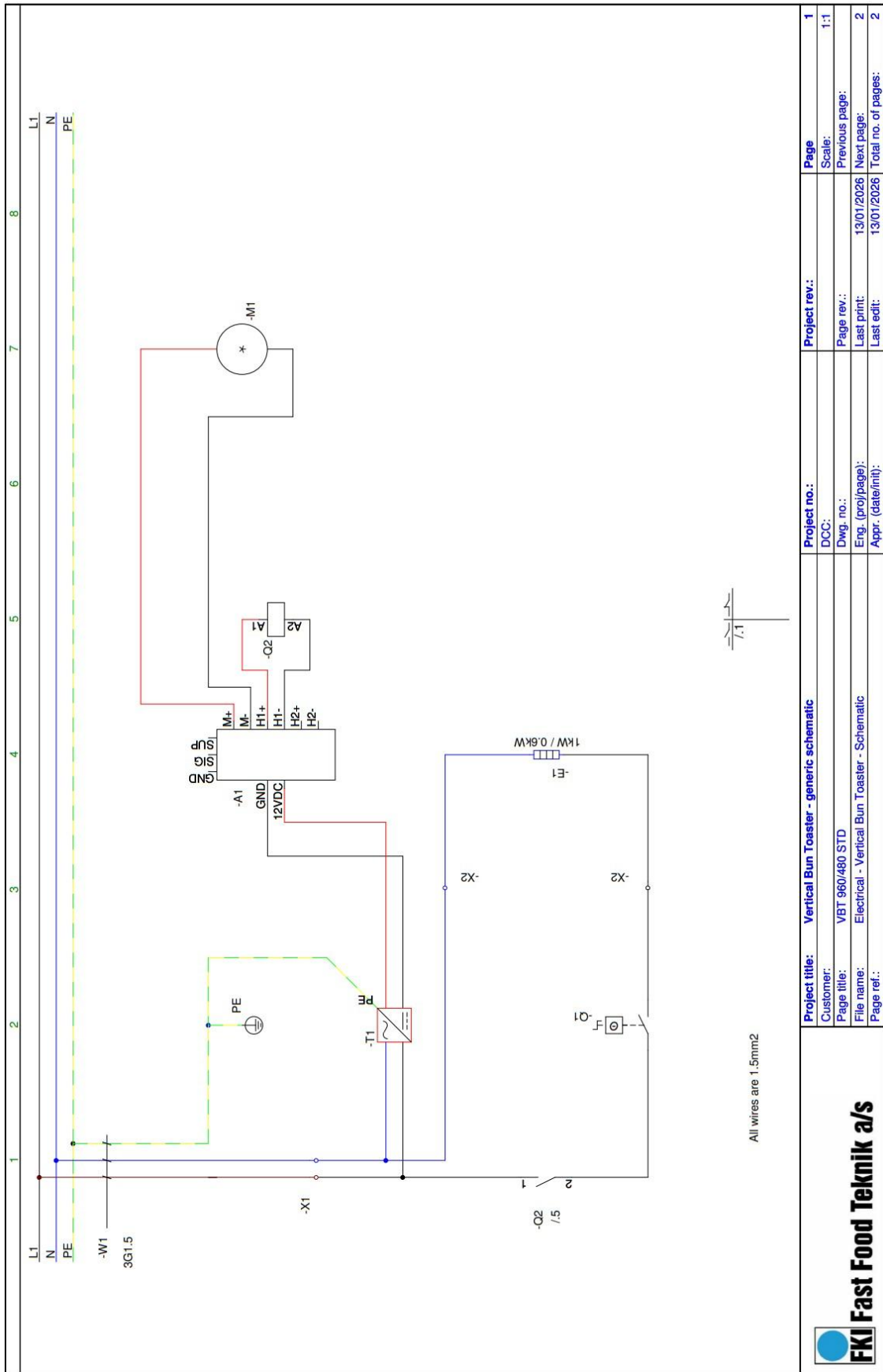
### 3.5 Spare parts list

BOM Table			
POS	ITEM NUMBER	PCS	NAME
1	83-21083	2	Cover
2	83-21085	2	Grip indicator
3	83-21082	2	grip
4	72-05533	1	Foil
5	83-21002	1	Spring for chain tensioner
6	83-08070	3	CHAIN ROLLER FOR TENSIONER
7	83-08616	3	SPROCKET HUB 05B1 Z13 Ø8 M5 Tailstock
8	83-08584	3	SPROCKET HUB M8X3 Z10 Ø8 TAILSTOCK M4
9	83-21088	2	Tape VBT960 STD
10	83-21058	1	Bread divider/Teflon holder
11*	83-21065	1	HEATING PLATE VBT960, COUNTERSUNK HOLES
11**	83-21095	1	HEATING PLATE VBT480, COUNTERSUNK HOLES
12*	83-21066	1	HEATING PLATE VBT960, WITH M5 HOLES
12**	83-21094	1	HEATING PLATE VBT480, WITH M5 HOLES
13*	83-21043	1	Heat element VBT960 1.0kW/230V
13**	83-21109	1	Heat element VBT480 0,6kW/230V
14	83-21078	1	Lock for forehead
15	74-00031	1	THERMOSTAT 50-250°C 1-POLE 240V
16	83-08202	1	ANGLE 50-250°
17	88-00231	1	SOLIDSTATE RELAY 4-32VDC 48-660VAC 60A
18	72-01326	1	PRINT CONVEYOR TOASTER
19	72-03508	2	TERMINAL BLOCK 2-POLE PORCELAIN
20	83-10028	1	POWER SUPPLY 100-240V/0.35A - 12V/1.3A
21	81-06027	4	LEG BLACK Ø22,5x11
22	83-10027	1	GEAR MOTOR OUT-V, DME34B5500B 24Vdc
23	74-00050	2	BALL PIN SCREW M6X16
24	72-05524	1	FOIL FOR CT ADV

\*VBT960STD

\*\*VBT480STD

### 3.6 Electrical diagram





## Cleaning

### 3.7 Generally



Remember personal safety equipment see point 2.1

Before using the machine for the first time, wipe all surfaces that are in contact with food with a damp cloth. Do not use cleaning agents containing acid.

### 3.8 Daily cleaning

It is important that the tape of the appliance is kept clean of crumbs and bread residues. You may want to use a brush with a handle for cleaning.

Daily cleaning is carried out when the appliance has cooled down. The bread tray is emptied of bread residue and washed with a damp cloth. Clean the appliance by wiping with a damp cloth on the outside.

The heating surface is equipped with a Teflon sheet, which can be removed by lifting the bread divider at the top and removing the foil. The foil can be washed with a brush/cloth.

The Vertical Bun Toaster VBT960 STD is marked with the following symbols and pictograms:



Warm surface – wear gloves

## Disposal

### 3.9 Packaging

The packaging should not be left in the environment but should be disposed of in accordance with local regulations.

### 3.10 The machine after discontinuation of use

The device is marked with a recycling symbol in accordance with Executive Order 148 of 8 February 2018 (the Electronic Waste Order). WEEE2 Directive 2012/19/EU

This means that you must dispose of it in accordance with the municipality's regulations, e.g. in a container set up for this purpose at the municipality's recycling centre, when the product has reached the end of its life.



## 4 EU DECLARATION OF CONFORMITY



EU DoC ID: FKI 025  
Verninge, 13-aug-2025

# EU DECLARATION OF CONFORMITY

We FKI Fast Food Teknik a/s declares under our sole responsibility that the product Vertical Bun Toaster with

Type Code.:  
**SVT-25**

are in conformity with the following directive(s), standard(s) or other normative document(s), provided that the products are used in accordance with our instructions.

Directives	Standards
Machine Directive 2006/42/EC	EN/ISO 12100:2010
	EN/IEC 60335-1:2012
	EN/IEC 60335-1:2012/AC:2014
	EN/IEC 60335-1:2012/A11:2014
	EN/IEC 60335-2-48:2003
Electromagnetic Compatibility Directive 2014/30/EU	EN5501-1:2006 + A1:2009 + A2:2011
WEEE Directive 2012/19/EU	EN55014-2:1997 + A1:2001 + A2:2008
ROHS Directive 2011/65/EU	
Regulations	Standards
Food Contact Materials 1935/2004	N/A
Good Manufacturing Practice 2023/2006	

Date 13/8-2025	Issued by  Søren Poulsen - Managing Director
-------------------	--

FKI Fast Food Teknik a/s only vouches for the correctness of the English version of this declaration. In the event of the declaration being translated into any other language, the translator concerned shall be liable for the correctness of the translation.

Byghøjvej 5 · Verninge · DK-5690 Tommerup  
Tel. +45 64 75 10 66 · Fax +45 64 75 10 88 · CVR no. 1472 8287 · www.fki.dk



**FKI Fast Food Teknik a/s**

Byghøjvej 5 · Verringe · DK-5690 Tommerup · Tel. +45 6475 1066 · [info@fki.dk](mailto:info@fki.dk) · [www.fki.dk](http://www.fki.dk)